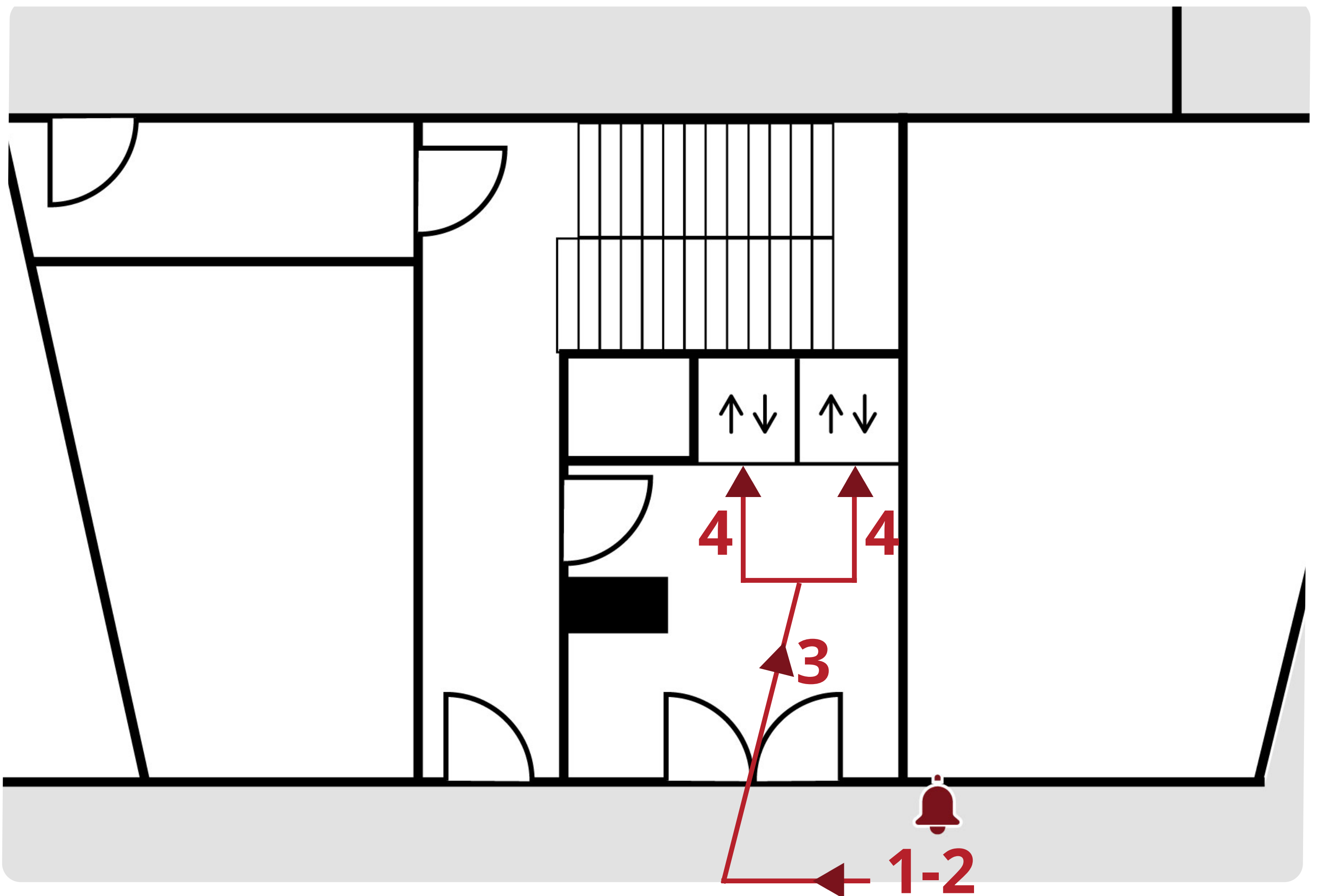


Directions to Bee360's office



1 Go to doorbell

You will find the bell on the right wall next to the glass doors.



2 Ring the bell

Select "**Bee360**" from the options. Press **OK** to confirm.



! Please be aware that the doorbell will only ring once. If you hear just a single "ding," this is completely normal.

3 Enter

The door will open automatically and you can enter



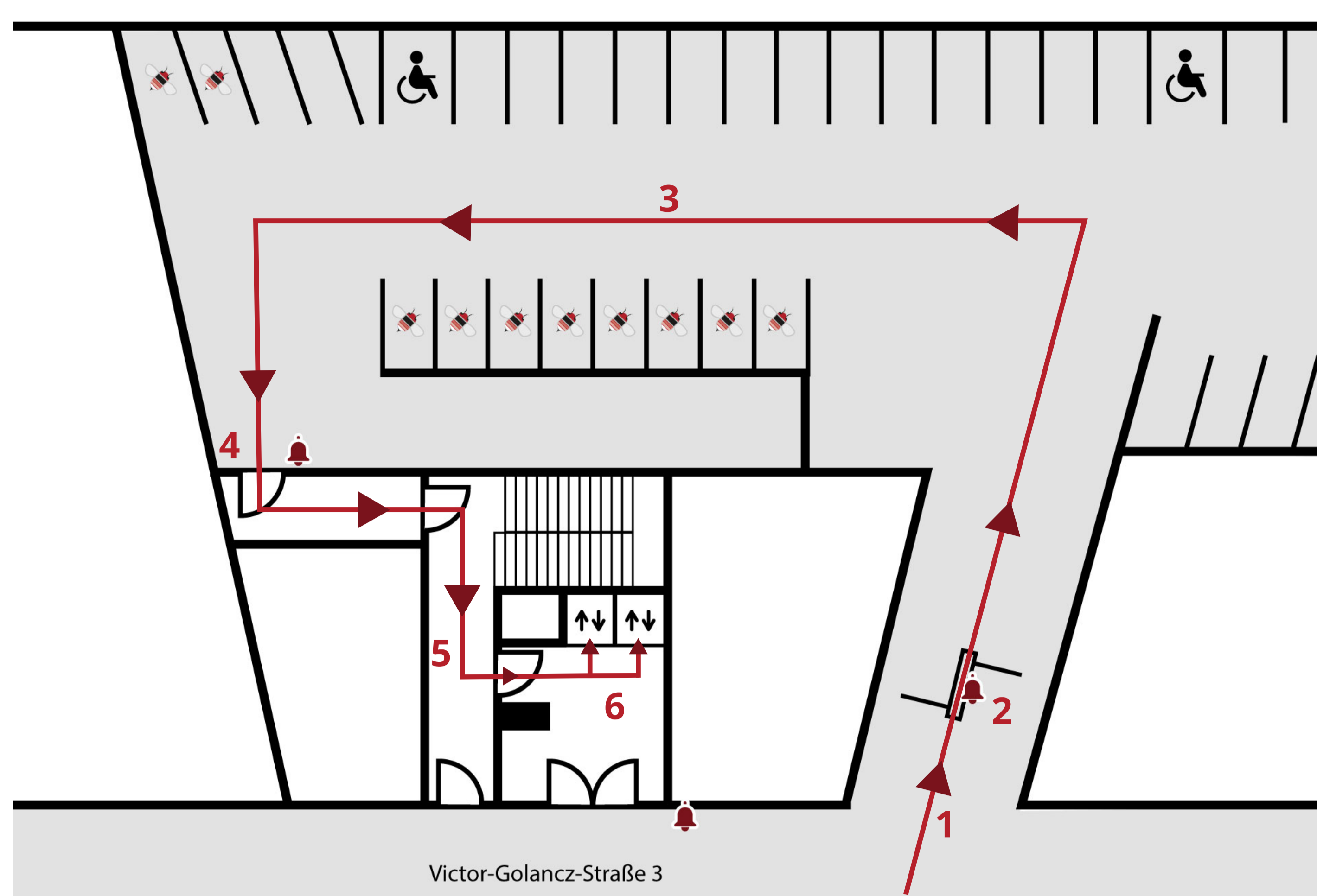
4 Take the elevator

Wait inside one of the elevators and it will take you to the 6th floor.

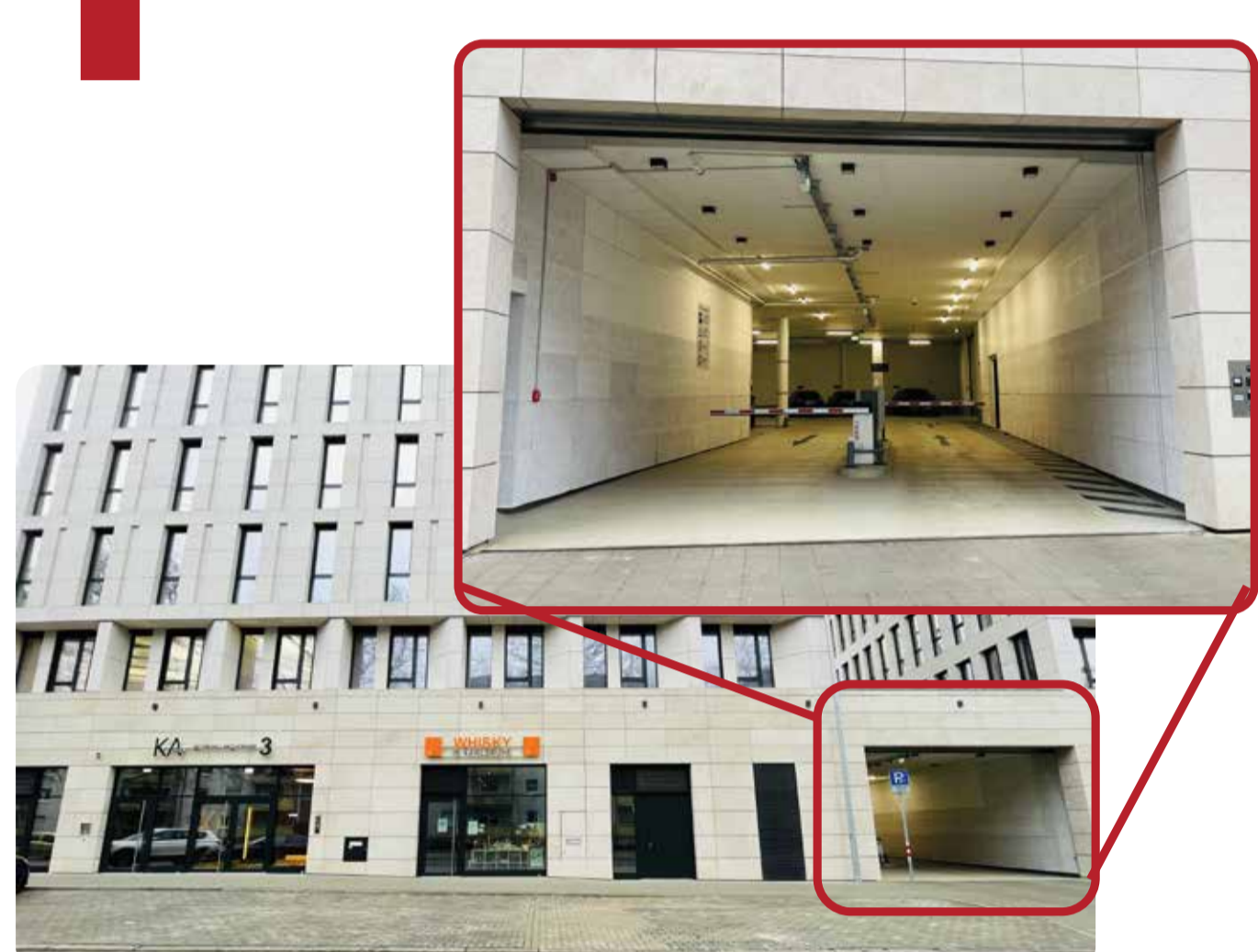


! Please **stay inside** one the elevators and do not switch to another elevator to make sure you reach the Bee360 floor.

Directions to Bee360's office Using a car



1 Drive to the garage



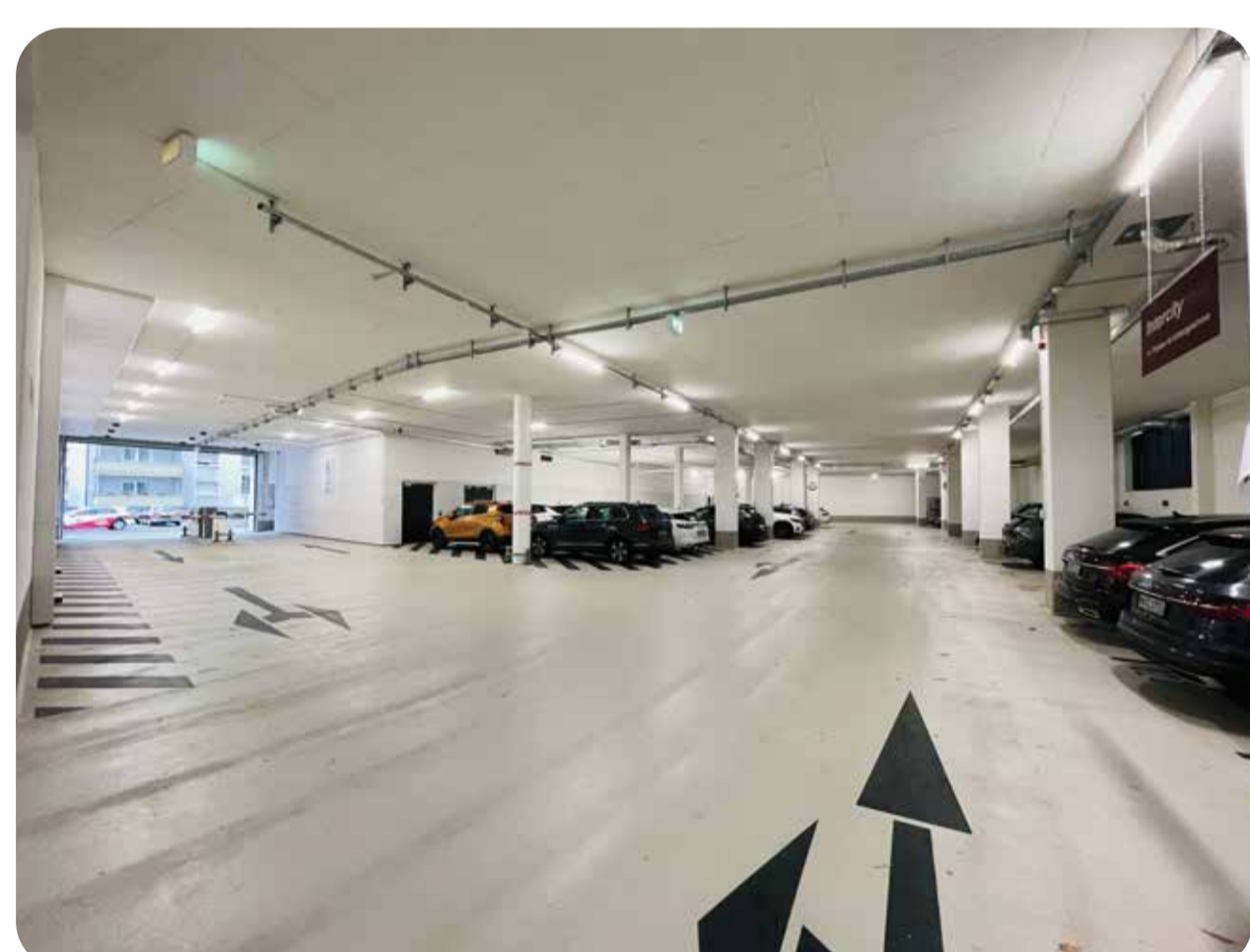
2 Ring the bell at the gate

Select "Bee360" from the options. Press **OK** to confirm.



3 Park your car

Please park your car on the Bee360 marked spots



4 Ring bell by the glass door in garage

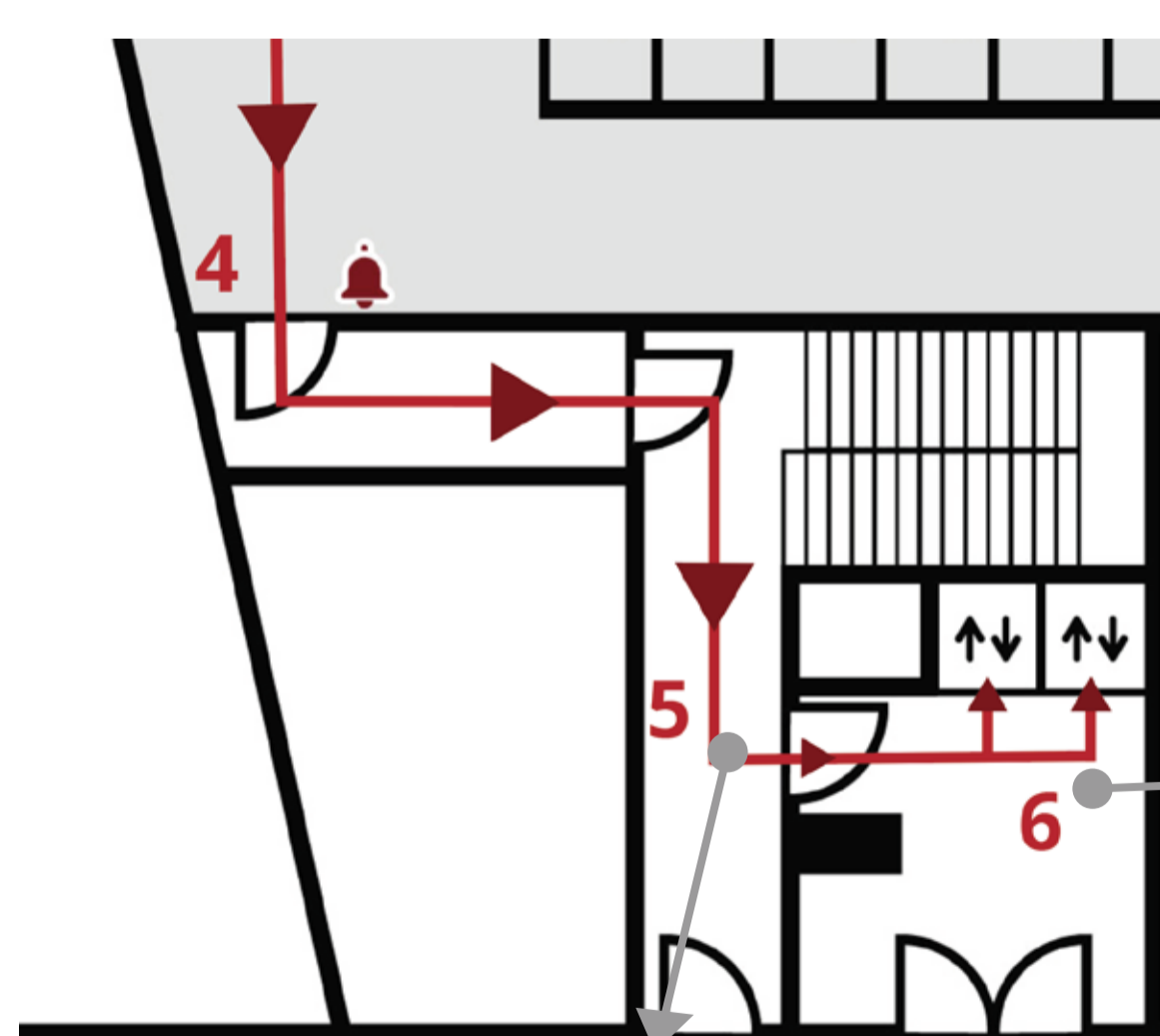
After parking, go to the glass door and ring the bell just like in step 2



! Please be aware that the doorbell will only ring once. If you hear just a single "ding," this is completely normal.

5 Walk to the elevator

- after the doors open walk through the hallway
- turn right and enter through the door on the left



6 Take the elevator

- **Do not** press any buttons
- Wait inside one of the elevators and it will automatically take you to the 6th floor.

! Please **stay inside** one of the elevators and do not switch to another elevator to make sure you reach the Bee360 floor.

